



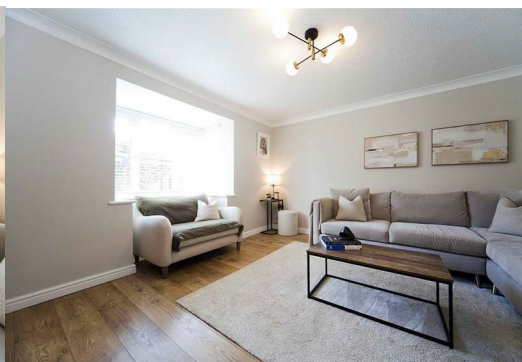
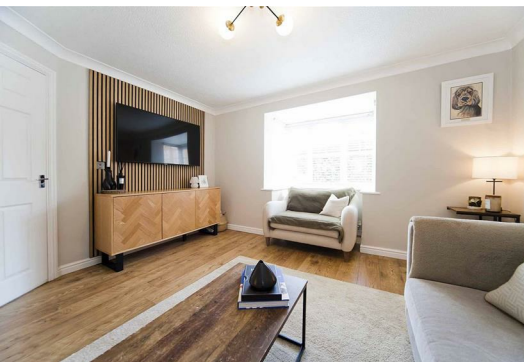
11 Cornflower Close

, Hartlepool, TS26 0WJ

£264,995



Igomove happily offer for sale this impeccably presented four bedroom detached house located within the popular Bishop Cuthbert estate. This delightful property offers several desirable attributes such as; four good size bedrooms, (master with en suite facilities), excellent family bathroom, beautiful lounge, open concept contemporary kitchen diner, well fitted utility room, guest cloakroom, entrance hallway, UPVC double glazing, gas central heating via HIVE system, well kept gardens (rear is South West facing), driveway, garage, stunning decor, fitted blinds, freehold.



Attractive modern facade, lovely end position, lawned garden, two car driveway, garage, front door with canopy over which enters into;

Inviting and bright entrance hallway with stairs to the first floor accommodation and under stairs fitted storage cupboard, ground floor WC, custom wall panelling, laminate flooring, side elevation window providing an abundance of natural light.

Impeccably presented lounge with bay window to the front elevation, laminate flooring, pristine decor, decorative coving, feature acoustic panelled wall.

Ground Floor guest cloakroom, comprising of close coupled WC and wall mounted wash basin, stylish subway tiling and stunning decor.

Open concept Wren kitchen/diner fitted with a wealth of sleek white high-gloss larder, wall, base and drawer cabinetry, complimentary wooden surfaces, stylish subway tiled back splash, dual integrated ovens, integrated hob, integrated stainless multi function extractor, integrated dishwasher, space for American fridge freezer, integrated wine cooler, plumbing/electric point for boiling water tap, peninsular breakfast bar, recessed spotlights, tiled floor, anthracite column radiator. With ample space to dine, the area is beautifully decorated with bespoke wall panelling, leading to patio door which opens to the rear garden.

Useful utility room with larder and base cabinetry, complimentary wood surfaces, sink with mixer tap, plumbing for washing machine, space to perform laundry duties, half glazed side elevation door.

To the first floor;

Master double bedroom located to the front of the property benefiting from contemporary fitted wardrobes, bespoke wall panelling, impeccable decor and with access to;

En suite facilities which include quadrant shower enclosure, concealed cistern WC and vanity wash basin, complimentary tiling, chrome heated towel radiator.

Bedroom two is a further double situated to the rear of the property, immaculately presented.

Bedroom three is a large single size room also located to the rear, currently utilised as a dressing room with immaculate decor and extensive fitted wardrobes.

The family bathroom comprises bath with shower head tap, close coupled WC and pedestal wash basin with complimentary tiling, recessed spotlights, chrome heated towel radiator.

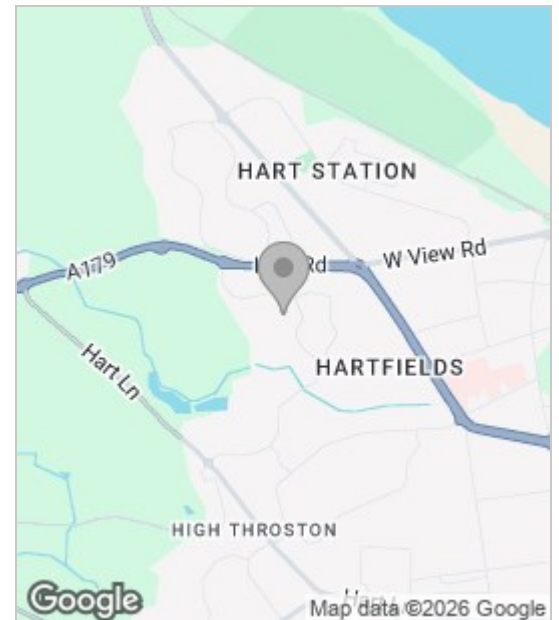
To the third floor you will have access to;

Bedroom four, which is a large double room with twin Velux windows to the rear of the property, laminate flooring, pristine decor, vaulted ceiling leading to a large storage room.

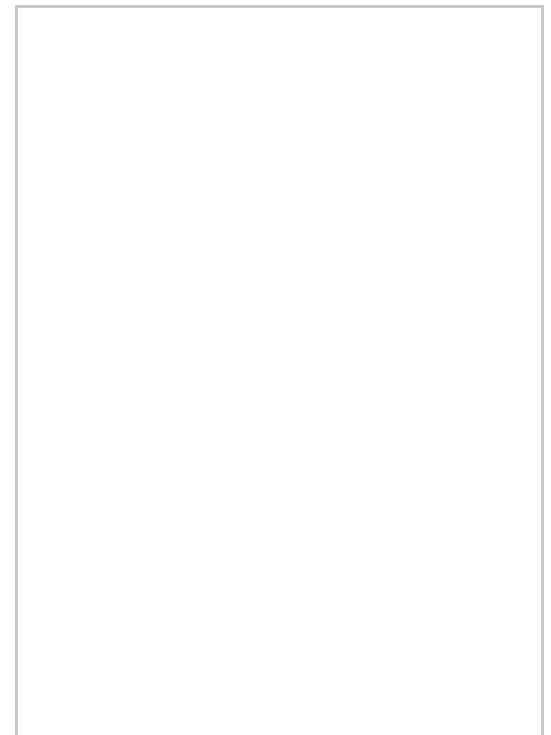
To the rear of the property, is an enclosed garden laid to lawn with patio area, decking and established shrubbery, plum and apple trees, pergola, and shed to the side of the house.

This outstanding property is not to be missed, contact the team at Igomove at your first opportunity to view, it will not disappoint.

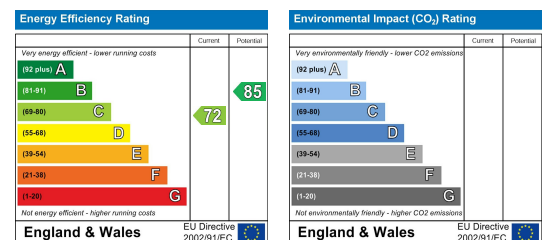
Area Map



Floor Plan



Energy Efficiency Graph



These particulars, whilst believed to be accurate are set out as a general outline only for guidance and do not constitute any part of an offer or contract. Intending purchasers should not rely on them as statements of representation of fact, but must satisfy themselves by inspection or otherwise as to their accuracy. No person in this firm's employment has the authority to make or give any representation or warranty in respect of the property.